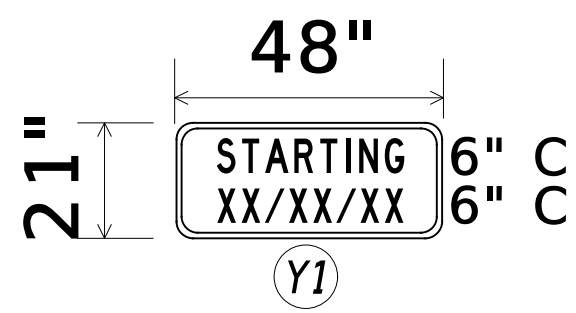
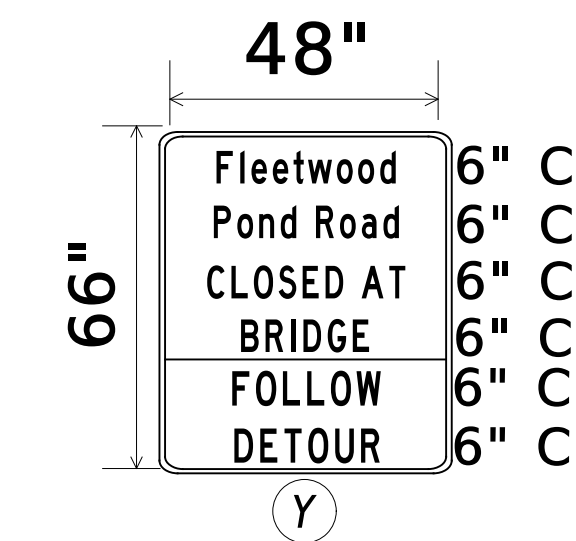
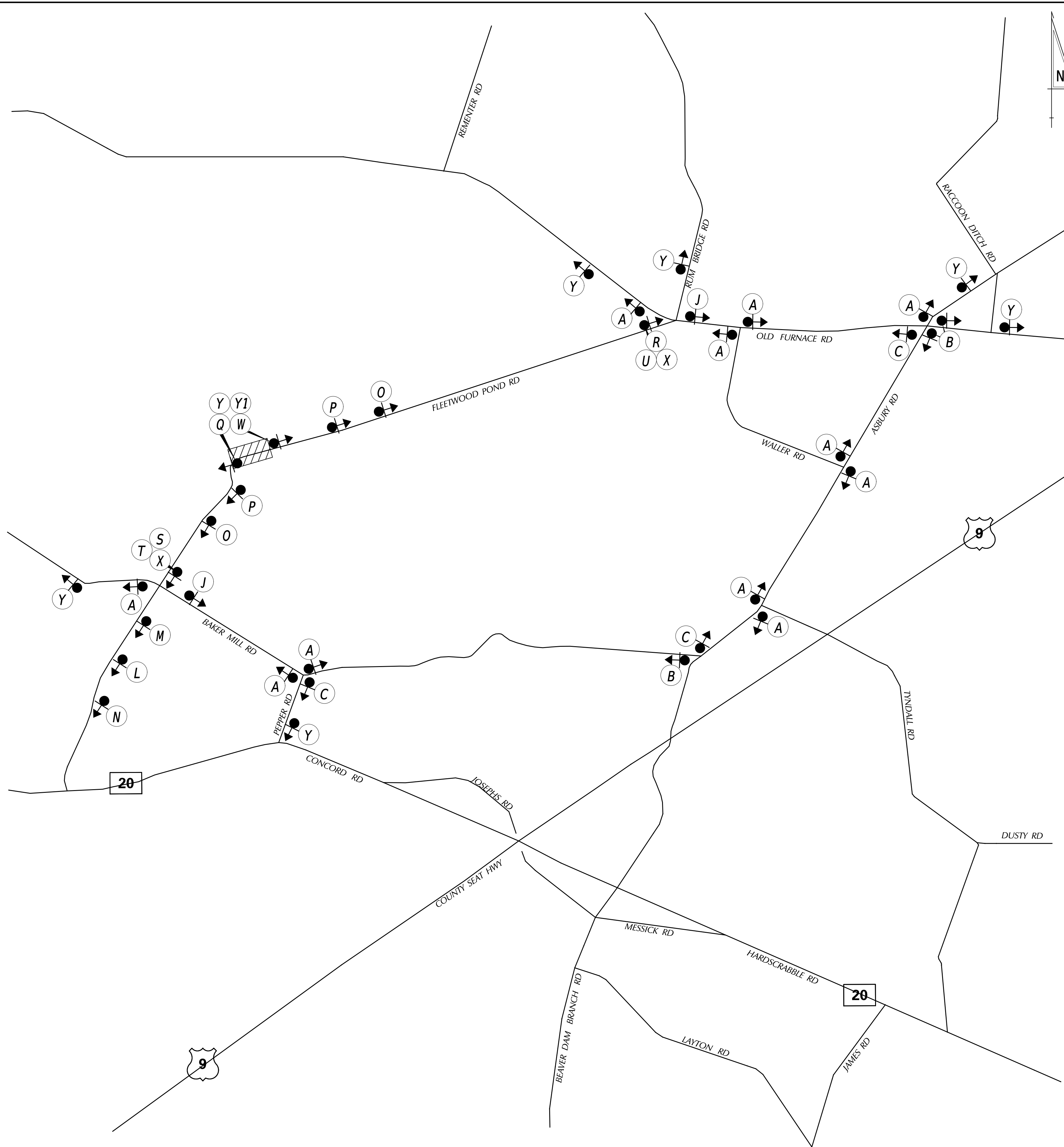


SPECIAL SIGNS

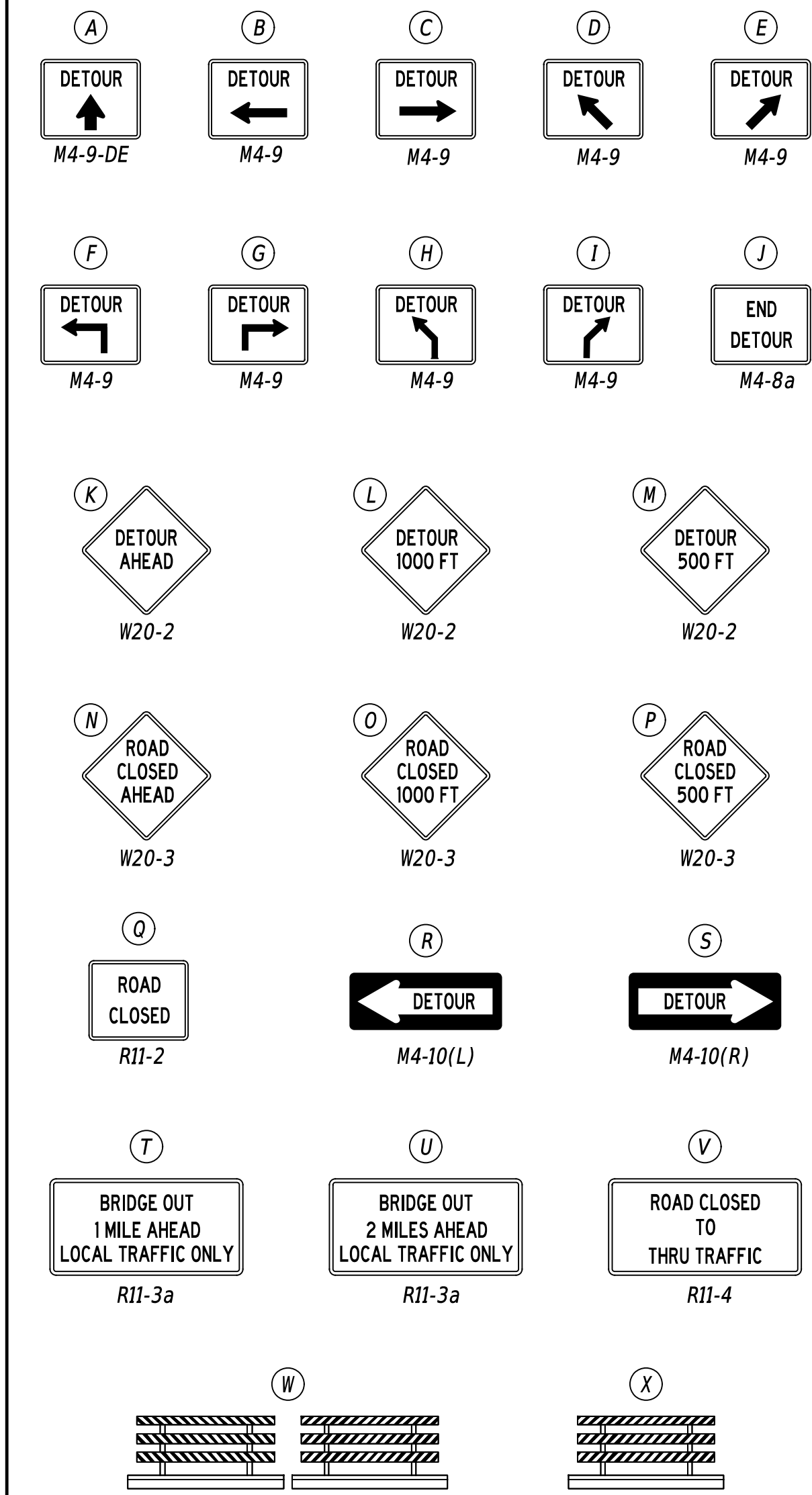


*RETROREFLECTIVE PRISMATIC FLUORESCENT ORANGE BACKGROUND; BLACK LEGEND

*DISPLAY (Y), ALONG WITH THE (Y1) PLAQUE, FOR 10 DAYS PRIOR TO THE IMPLEMENTATION OF DETOUR. (Y1) PLAQUE TO COMPLETELY COVER "FOLLOW DETOUR" LEGEND ON (Y) SIGN. UPON IMPLEMENTATION OF DETOUR, REMOVE (Y1) PLAQUE FROM (Y) SIGNS AND RELOCATE (Y) TO A LOCATION OUTSIDE OF CLOSURE AREA.



LEGEND



GENERAL NOTES

- ALL TEMPORARY TRAFFIC CONTROL DEVICES ARE TO BE SUPPLIED AND MAINTAINED BY THE GENERAL CONTRACTOR AND SHALL BE IN COMPLIANCE WITH THIS PLAN AND THE DELAWARE MANUAL ON UNIFORM TRAFFIC CONTROL DEVICES (DE MUTCD) LATEST EDITION.
- SIGNS "N" THROUGH "Q" AND "T" AND "V", THE WORD "ROAD" SHALL BE CHANGED TO "RAMP", "RR XING" OR "BRIDGE" WHERE APPLICABLE.
- "W" TYPE 3 BARRICADES AT A ROAD CLOSURE SHALL BE PLACED COMPLETELY ACROSS THE ROADWAY, FROM CURB TO CURB, OR FROM EDGE OF ROAD TO EDGE OF ROAD, WITH THE STRIPES POSITIONED DOWNWARD TOWARD THE CENTER OF THE ROADWAY.
- BARRICADES SHALL BE A MINIMUM OF 6 FEET WIDE UNLESS DIRECTED BY THE ENGINEER.

DETOUR DESCRIPTION

NORTHBOUND MOTORISTS WILL TURN RIGHT ONTO BAKER MILL RD, THEN TURN LEFT ONTO ASBURY RD, THEN TURN LEFT ONTO OLD FURNACE RD, AND ARRIVE BACK AT FLEETWOOD POND RD.

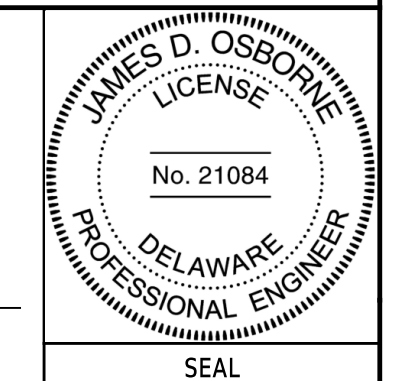
SOUTHBOUND MOTORISTS WILL USE OLD FURNACE RD, THEN TURN RIGHT ONTO ASBURY RD, THEN TURN RIGHT ONTO BAKER MILL RD, AND ARRIVE BACK AT FLEETWOOD POND RD.

CONCURRENCE FOR IMPLEMENTATION

TRAFFIC SAFETY *Justin Green* 10/15/2024 DATE

PREPARED BY
DELDOT - TRANSPORTATION SOLUTIONS
TRAFFIC SAFETY

Paul D...
10/16/2024
DATE



Dave Wynn
10/15/2024
DATE

QA/QC REVIEWER

I CERTIFY TO THE BEST OF MY KNOWLEDGE AND BELIEF THAT THIS DETOUR PLAN HAS BEEN PREPARED IN ACCORDANCE WITH THE DELAWARE MANUAL ON UNIFORM TRAFFIC CONTROL DEVICES.

ADDENDA / REVISIONS

NOT TO SCALE

OPEN END STRUCTURE MAINTENANCE,
SOUTH, FY25-27

CONTRACT	BRIDGE NO.	3-249
T202407902	DESIGNED BY:	JCG
COUNTY	CHECKED BY:	DBW
SUSSEX		

DETOUR PLAN - VEHICULAR
FLEETWOOD POND RD
@ BR 3-249

SECTION	SAFETY
SHEET NO.	X